

LIFT OPERATING TIMES www.skiwelt.at/summeroperatingtimes

Ellmau, Söll: 10.05. - 02.11.2025 • **Kufstein:** 01.05. - 02.11.2025 • **Brixen, Hopfgarten, Scheffau, Westendorf:** 24.05. - 26.10.2025 • **Going:** 07.06. - 05.10.2025
Itter: 29.05. - 02.11. on all weekends, 05.07. - 05.10. & 25.10. - 02.11. continuous

HIKING BUS

Further information bus.skiwelt.at/en



BONUS PARTNERS %

Purchasers of the Mountain Experience-Card or the ErlebnisSommerCard (summer season ticket) receive discounts at 22 bonus partners: leisure facilities, swimming pools, excursion destinations and adventure offers provide up to 25% discount on the normal price. Further information www.skiwelt.at/bonuspartners

WEEKLY PROGRAMME

www.skiwelt.at/en/events

Ellmi's Zauberwelt Ellmau		
Mon, Tue, Thu, Sun	07.07. - 07.09.2025	10 am - 12 am gold panning 1 pm - 3 pm carving walking sticks & magic wands
Fri	Fraturdays in summer	Sundowner at the Kaiserlounge Ellmau
Aussichtsberg Hohe Salve Hopfgarten		
Mon	26.05. - 20.10.2025 9 am	Guided hiking tour on the sunny side of the Hohe Salve (registration & meeting point: info office Hopfgarten) Free participation with guest card, excl. lift ticket ascent & descent
Aussichtsberg Kleine Salve Itter		
Tue	05.07. - 05.10. & 25.10. - 02.11.2025 8.30 am	Yoga on the Kleinen Salve (meeting point: valley station Salvistabahn Itter, registration: info office Itter)
Thu	May - October 4 am	Sunrise hike to the KRAFTalm (meeting point: valley station Salvistabahn Itter)
Alpinolino Westendorf		
Mon	07.07. - 01.09.2025 10.30 - 12.30 am	Alpinolino children's festival
Astberg Pony Alm Going		
	05.07. - 07.09.2025 9.30 am - 4 pm	Pony riding Astberg (off-peak season 07.06. - 29.06. & 13.09. - 05.10.2025 only on weekends, public holidays and bridging days)
Hexenwasser Söll Hohe Salve		
Daily (July-Aug)	12 am / 2pm 1.13 pm 3 pm	Broom flight dream journey Witches spectacle at the Hexerei River construction at the Blaues Wunder
Mon	11 am 1 pm	Giant bubbles Cherry cinema at the bee house every Monday: Long evening (07.07. - 25.08.2025)
Tue	11 am	Water sound at the witch's umbrellas
Wed	11 am	Sundials at Hohe Salve (witch's umbrellas in bad weather)
Thu, Sat	11 am	Giant bubbles every Thursday: Witches' Thursday in good weather* *weekly evening trips (17.07. - 28.08.2025)
Fri, Sun	11 am 1 pm	Water sound at the witch's umbrellas Cherry cinema at the bee house

AUTUMN FAMILY SPECIAL
20.09. - 02.11.2025
CHILDREN UP TO 15 YEARS RIDE FREE!

If one of my parents purchases a Mountain Experience-Card which is valid for at least three days, I and my siblings under the age of 15 (born 2010 - 2020) ride for free during the same period of time. www.skiwelt.at/autumnfamilyspecial

HEXENWASSER SÖLL HOHE SALVE

A place for explorers, dreamers, the curious and all those who have not yet forgotten how to marvel. The witches await me at the various stations with their 'witch experiments'. With the annual theme of soil, I can immerse myself in a mystical world full of life together with the Hexenwasser witches. I discover earth tunnels, mineral resources and world worlds.

www.skiwelt.at/en/hexenwasser
+43 5333 5260

Opening hours:
 8.45 am - 5.30 pm Gondelbahn Hexenwasser
 9 am - 4.45 pm Gondelbahn Hohe Salve



KAISERWELT SCHEFFAU

I can enter the KaiserWald for exciting adventures through the castle gate at the mountain station. At 1,650 meters above sea level, along scenic hiking trails and various play stations, I'm on a quest to find the Emperor's seven diamonds. An alpine adventure for young explorers and those young at heart.

www.skiwelt.at/en/kaiserwelt
+43 5358 8153

Opening hours:
 9 am - 5 pm Brandstadlbahn I + II



ALPINOLINO WESTENDORF

The fun rolls on! You can discover the Spoggolino marble run around the Choralpe. Clever foxes, nimble weasels and real explorers go on an exciting journey of discovery.

www.skiwelt.at/en/alpinolino
+43 5334 2000

Opening hours:
 8.30 am - 5 pm Alpenrosenbahn I + II



HOHE SALVE HOPFGARTEN

The view from the Hohe Salve is breathtaking. The comfortable ascent to the summit with two ultra-modern gondola lifts gives me unforgettable panoramic views of over 70 three-thousand metre peaks.

www.skiwelt.at/en/hohesalve
+43 5335 2238

Opening hours:
 8.45 am - 5 pm Salvenbahn I & II

KLEINE SALVE ITTER

The panoramic gondola brings me to the summit of the Kleine Salve. An impressive 360 degree panorama with sweeping views of the Wilder Kaiser, the Hohe Salve, the Brixental valley and the wide Inntal valley awaits me there. Directly below the summit of the Kleine Salve is a crystal-clear mountain lake, which serves as a place of rest and relaxation and invites you to enjoy many hours of sunshine in the open air.

Opening hours Salvistabahn: 8.45 am - 5 pm, +43 5335 2238 30

Mit der Bergbahn Erlebnis-Card der **SkiWelt WILDER KAISER BRUNNTAL**

#icherlebemehr
www.skiwelt.at

RIESENWELT BRIXEN IM THALE

Adventure playgrounds, fun and games at the RiesenWelt, clearing everything in the skittles game, gliding across the lake on a wooden raft and many other nature discovery stations await me.
NEW: Giant panoramic viewing platform.

www.skiwelt.at/en/riesenwelt
+43 5334 8507

Opening hours:
 8.45 am - 5 pm Gondelbahn Hochbrixen
 9 am - 4.45 pm Zinsbergbahn
 (see homepage)



ELLMI'S ZAUBERWELT ELLMAU

Surrounded by the unique panoramic backdrop of the Wilder Kaiser, I can discover many hidden secrets around the Ellmauer Hartkaiser in Ellmi's Zauberwelt. A new puzzle adventure awaits me and I discover many more surprises in Ellmi's Zauberwelt.

www.skiwelt.at/en/ellmi
+43 5358 2320

Opening hours:
 9 am - 5 pm Hartkaiserbahn



PONYALM ASTBERGSEE GOING

From the Wilder Kaiser to the Großglockner - the panorama on the Astberg is gigantic. With 20 ponies, a veritable pony pasture awaits me at the Astbergsee.

www.skiwelt.at/en/ponyalm
+43 5358 2442

Opening hours:
 9 am - 5 pm Astbergbahn



KAISERGEBIRGE KUFSTEIN

The traditional Kaiserlift in Kufstein brings nature lovers like me up to the high plateau of the Steinbergalm at 1,200 m. Once I reach the summit, wonderful hiking trails, panoramic peaks and a traditional mountain hut culture as well as the mighty backdrop of the Kaiser mountains in the nature reserve await me.

www.skiwelt.at/en/kaiserlift, **+43 5372 6930 363**
Opening hours: 8.30 am - 4.30 pm Kaiserlift Kufstein

MOUNTAIN EXPERIENCE-CARD SUMMER

- 14 cable cars & lifts in the Wilder Kaiser - Brixental region
- 7 mountain theme parks & natural experience Kaisergebirge
- 1 hiking & bathing bus 'Kaisererl'
- Bonus partners (up to 25% discount) - Further information www.skiwelt.at/bonuspartners

- 39 cable cars & lifts in the Kitzbühel Alps
- Bonus & outdoor partners (up to 50% discount)
- Available at all Wilder Kaiser - Brixental lift ticket offices



INFORMATION

- Bergbahn Brixen**
 Littwei 1 - AT-6364 Brixen im Thale
 PHONE +43 5334 8507
bergbahnenbrixen@skiwelt.at
www.skiwelt.at/riesenwelt
www.riesenwelt.at
- Bergbahnen Ellmau-Going**
 Weiße Hugel 5 - AT-6392 Ellmau
 PHONE Ellmau +43 5358 2320
 PHONE Going +43 5358 2442
bergbahnenellmau@skiwelt.at
www.skiwelt.at/ellmi
www.ellmi.at
- Bergbahnen Hopfgarten**
 Meierhofgasse 29
 AT-6381 Hopfgarten
 PHONE +43 5333 2238
bergbahnenhopfgarten@skiwelt.at
www.skiwelt.at/hohesalve
www.hohesalve.at
- Bergbahn Itter**
 Alte Bundesstraße 1 - AT-6305 Itter
 PHONE +43 5333 2238 30
bergbahnenhopfgarten@skiwelt.at
- Bergbahn Scheffau**
 Schwanzzach 2 - AT-6351 Scheffau
 PHONE +43 5338 8153
bergbahnen-scheffau@skiwelt.at
www.skiwelt.at/kaiserwelt
www.kaiserwelt.at
- Bergbahn Söll**
 Stammfanger 21 - AT-6306 Söll
 PHONE +43 5333 3260
bergbahnensoell@skiwelt.at
www.skiwelt.at/hexenwasser
www.hexenwasser.at
- Bergbahn Westendorf**
 Bergsträßle 18 - AT-6363 Westendorf
 PHONE +43 5334 2000
bergbahnen-westendorf@skiwelt.at
www.skiwelt.at/alpinolino
www.westendorf.at

GUIDELINES The SkiWelt tariff guidelines apply: www.skiwelt.at/guidelines. All information on data protection at www.skiwelt.at/data-protection

JUMP IN & DISCOVER
Information 2025

Meine BERGWELT wie sie mir gefällt
 #icherlebemehr www.skiwelt.at

Block & print errors reserved - Layout & graphic: www.tourismmarketing.co - Image rights: Image archive www.skiwelt.at - Photographer: Christian Kapfinger, Alex Gretter, Daniel Reiter, Peter von Felbert, M. Knieps, Norbert Eisele-Herr, Hannes Dabering & Schoner Roland, Mathias Gartner, Dietmar Denger, Carsten Sitzmann

JUMP IN & DISCOVER

Austria's greatest mountain experience awaits.

- ★ 7 mountain theme parks
- ★ 14 cable cars & lifts (May - November)
- ★ 700 km hiking paths
- ★ 50 huts
- ★ KaiserJet

- KaiserJet (hiking & bathing bus)
- KaiserJet bus stops
- Giant experience path
- Alpinolino Holzwormweg
- Alpinolino panoramic trail - Kreuzjochlsee



#icherlebemehr
www.skiwelt.at



GIANT EXPERIENCE PATH

The giant experience path is a special kind of long-distance hiking trail. It connects the exciting stations of the individual theme parks. In which place I start is completely up to me. After the comfortable ascent with the lifts, I can combine the individual sections as desired. I can find the exact directions at www.skiwelt.at/giantexperiencepath

HUTS . RESTAURANTS

Brixen im Thale

1	SkiWelt-Hütte	+43 699 17264905
2	Jausenstation Brantlalm	+43 699 12372725
3	Filzalm	+43 660 6132003
7	Berggasthof Nieding	+43 5334 8227
9	Jausenstation Oberkaslach	+43 5334 2665
10	Brixner Stadl	+43 5334 30311
97	Jausenstation Speckalm	+43 5334 8560

Ellmau - Going

54	Jausenstation Treichlhof	+43 5358 43369
55	Jausenstation Hollenauer Kreuz	+43 5356 71097
56	Panoramarestaurant Bergkaiser	+43 5358 2320222
56	Kaiserlounge	+43 5358 2320260
57	Jägerhütte	+43 664 4388946
58	Rübezahl Alm	+43 5358 2646
59	Tirol Bar & Grill	+43 5358 2320132
61	Tirol Lodge Lieblingsplatzl	+43 5358 2320503
62	Jezz / AlmResort	+43 5358 43919
63	Blattlalm Going	+43 5358 2401
64	Ellmauer Alm	+43 5358 3755509
88	Après Ski Bar Fabels	+43 664 5176953

Scheffau

30	Bergrestaurant Brandstadl	+43 664 2788244
31	Tanzbodenalm	+43 5358 43150
33	Kummereralm	+43 664 4303590
34	Au Hochalm	+43 664 8341500
35	Neualm	+43 664 4408968
36	Gasthaus Hochlechen	+43 5358 8351
42	Bergrestaurant Jochstüb'n	+43 5358 8555

Söll

27	Gipfelalm Hohe Salve	+43 5335 2216
46	Alpengasthof Hochsöll	+43 5333 52604500
47	Gasthof Gründlalm	+43 5333 5060
48	Gasthof Stöcklalm	+43 5333 5127
51	Restaurant Hexenalm	+43 5333 5544
99	Das Rabennest Café / Shop	+43 5333,5260 4444
98	Der Bäck Cafe & Bar	+43 5333 5260 4505

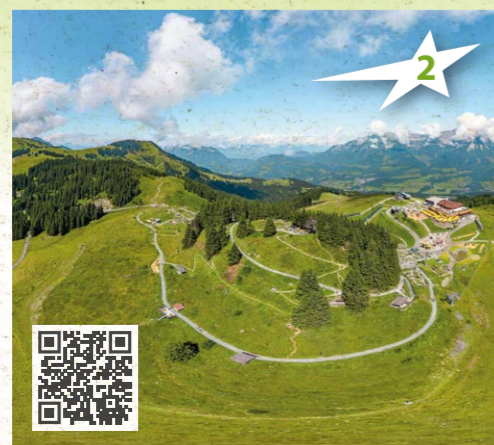
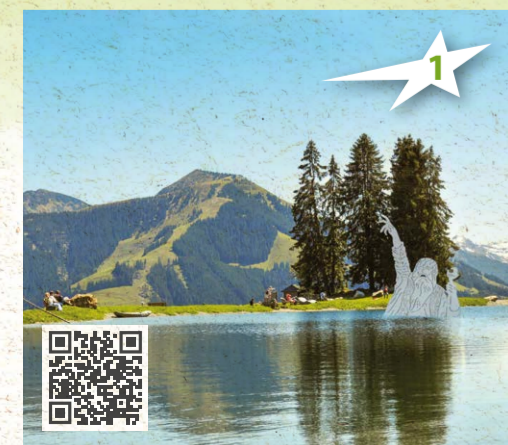
Hopfgarten - Itter

27	Gipfelalm Hohe Salve	+43 5335 2216
21	Alpengasthof Rigi	+43 5335 2430
23	KRAFTalm	+43 5332 75152
17	Sunnseithütte	+43 664 9197709
18	Das Brix Restaurant & Weinbar	+43 5335 2420730

Westendorf

66	Sonnalm	+43 676 9269455
67	Rice & Fries Choralpe	+43 660 7288102
68	Alpenrosenhütte DAV	+43 5334 6488
69	Bergrestaurant Talkaser	+43 5334 2187
71	Berggasthaus Stimmlach	+43 5334 6485
74	Alpengasthof Brechhornhaus	+43 664 8158547
75	Jausenstation Schrandlhof	+43 5334 2511
76	Gassnerwirt	+43 664 3555555
79	Restaurant-Bar Bergtraum	+43 5334 30118
82	Alte Mittel	+43 664 1950050
96	Sunset Bar	+43 676 7059920

- RIESENWELT** BRIXEN IM THALE
- ELLMI'S ZAUBERWELT** ELLMAU
- ASTBERG PONY ALM** GOING
- HOHE SALVE** HOPFGARTEN - SÖLL
- HEXENWASSER** SÖLL - HOHE SALVE
- KAISERWELT** SCHEFFAU
- ALPINOLINO/ALPINORAMA** WESTENDORF



The number attached to the individual huts corresponds to the numbering on our panorama.
www.skiwelt.at/huts-summer
☒ = Mountain breakfast

MOUNTAIN BREAKFAST

This very special culinary experience, which takes place in the morning and enables splendid 360 degree panoramic views, is offered by over 31 rustic huts and mountain inns, accessible by the summer lifts. Every hut serves its own specialties that make breakfast unique: from a "classic" breakfast, savoury with bacon and eggs or sweet with jam and honey, to a traditional white sausage or "hunter's" breakfast - each hut tries to create breakfast with its own distinct taste and style.
www.skiwelt.at/mountainbreakfast